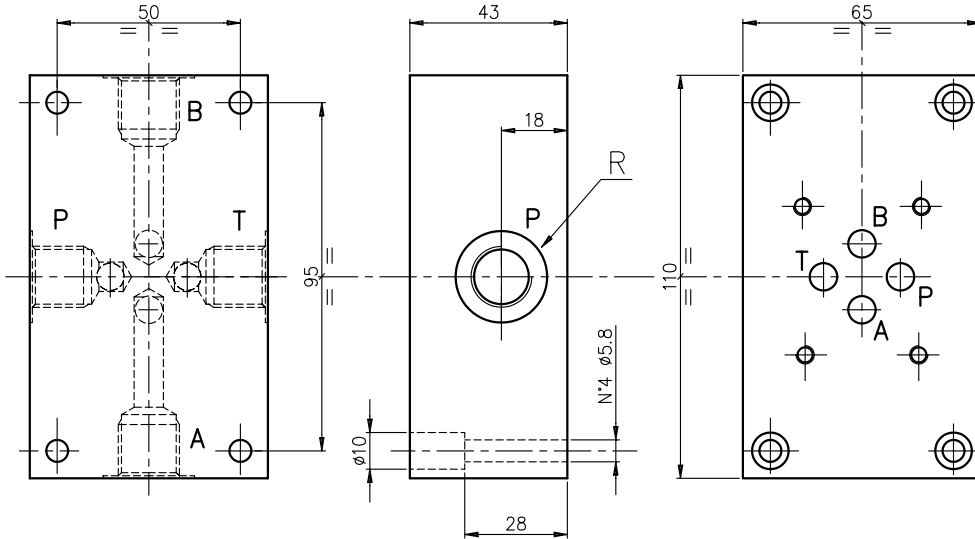


Subplate with A-B-P-T on side. Weight 1.8 kg
 Grundplatte mit A-B-P-T seitlich. Gewicht 1.8 Kg



Ordering code:
 Bestell-Code:

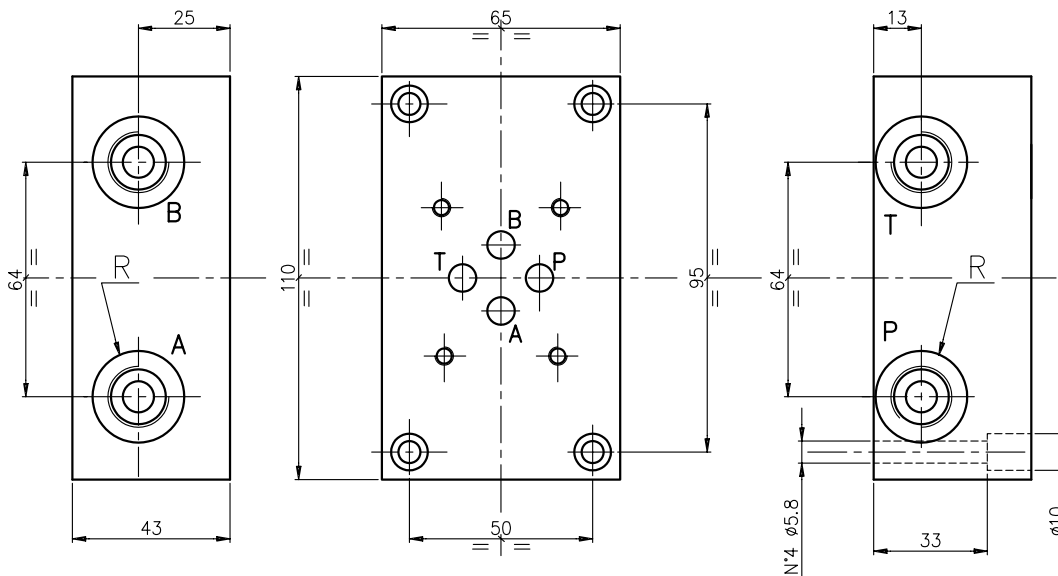
Subplate
 Grundplatte = S

ES 3 D * L — L = side ports
 seitl. Anschlüssen
 38 = R 3/8" G
 12 = R 1/2" G
 CETOP 3 — D = Model / Modell

Hydr. symbol
 Symbol



Subplate with A-B-P-T on side. Weight 1.8 kg
 Grundplatte mit A-B-P-T seitlich. Gewicht 1.8 Kg



Ordering code:
 Bestell-Code:

Subplate
 Grundplatte = S

ES 3 D * LL — LL = side ports
 seitl. Anschlüssen
 38 = R 3/8" G
 14 = R 1/4" G
 CETOP 3 — D = Model / Modell

Hydr. symbol
 Symbol

